



# Athletic and Recreation Facilities

Design Group



bringing a full-service approach to athletic and recreational facility design

Engineers Architects Planners

**Athletic** and  
**Recreation**  
**Facilities**  
Design Group

*Our specialties*

*include planning,*

*design and permitting*

*of high-demand,*

*cost-effective facilities*

*in challenging*

*locations.*

**SPECIALTY SERVICES**

***Design of athletic and recreational facilities is a Gale specialty –***

For over 38 years, Gale Associates, Inc. has distinguished itself as an industry leader in the planning, design, permitting, and construction administration of high quality, cost-effective athletic and recreation facilities. Our full-service approach to each athletic facility assignment is complemented by a talented, experienced, and diverse team of surveyors and planners; civil, environmental, traffic, and structural engineers; geologists; and building and landscape architects. Whether a state-of-the-art, all-weather university complex, or a neighborhood park and Little League facility, Gale can configure the right team to deliver outstanding design solutions.



***The Gale Team***



***Synthetic Surface Running Tracks • Synthetic Turf Athletic Fields • Natural Turf Athletic Fields •***

***We have recently designed dozens of state-of-the-art polyresin-latex and urethane tracks matching the right surface to the owner's needs and budget. Gale has designed equiquad tracks as well as multi-radial or "broken back" layouts meeting both NCAA and NFSHSA geometry requirements. We have extensive experience with the planning and design of new track facilities, track renovations, and conversions from 440-yard English layouts to 400-meter metric layouts.***



**James J. Fitzpatrick Stadium**  
***Maine Parks & Recreation Distinguished Facility Award***



**Mohawk Trail Regional H.S.**



**Beverly H.S. Track**



**UMass Lowell Stadium**



**Roberts Field Athletic Complex**  
***ACEC Design Excellence Award***



**Watkins Field Athletic Facilities**



**Silver Lake Regional H.S.**



**precise  
engineering...**

**Full-Service Approach** – Gale professionals assist in all phases of each athletic and recreation project – feasibility studies, master planning, cost estimating, schematic design, preparation of bid documents, permitting, bidding and award, construction monitoring and closeout.

**In-house Design Capability** – Gale has the expertise to address every aspect of your project requirements, from environmental site assessments, to traffic, to landscaping, to actual facility design.

**Capacity** – With a technical staff of over 100 professionals and offices across the United States, Gale has the depth and capacity to meet your schedule requirements.



**Athletic Turf & Irrigation Design • Campus/Complex Master Planning • Timing Systems & Scoreboards • Driving Ranges**

**Athletic Turf and Irrigation Design matches the owner's needs and budget to the right turf system. In recent projects, Gale has successfully designed synthetic turf (both "infill" and conventional) and natural turf (both sand-based and conventional) fields of all types. We specialize in effective formal underdrain systems and cost-effective irrigation design.**

**UMass Natural Turf  
Soccer Field**



**Wolfeboro Area  
Recreation  
Association**



**English H.S. Multi-Purpose Fields**



**Rocky Marciano Stadium  
Turf Replacement**

**Sports  
Turf  
Managers Association**



**Sports Facilities Experience** – Gale’s designers are fully versed in the most recent innovations, methods, materials and vendors. We provide state-of-the-art, cost-effective design solutions.

**Technical Advantage** – Survey is done with a GPS satellite-based system that allows for superior accuracy and efficiency. AutoCAD is used for design preparations. Drainage design is supported by Haested Method software, and MasterSpec is used to assist in the preparation of technical specifications. Stringent design standards and a rigorous quality assurance program provides timely and accurate design deliverables.

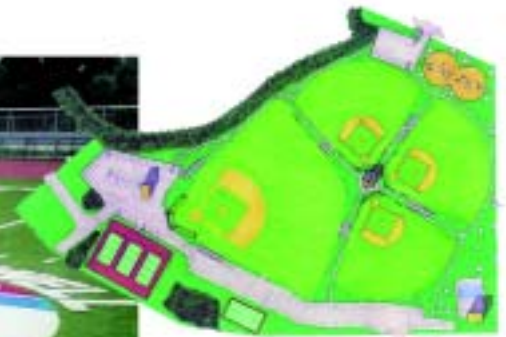
**...effective communicators**



• Wetlands Permitting • Golf Course Design & Permitting • Facility ADA Access Improvements • Landscape Design •

*We offer a variety of “skinned” infield mix specifications and prepare environmentally sensitive Integrated Turf Management Plans to meet changing permitting requirements.*

UMass Football Field



Nipper Maher Park



Trinity College Turf Replacement

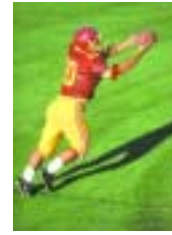
**Practical solutions to challenging site conditions –**

With a full array of engineers, environmental scientists and landscape architects, we assist our clients in devising responsible and pragmatic solutions to make the best use of challenging sites.

**creative  
site planners...**



**Cost-Effectiveness** – As Gale completes each recreation/athletic design assignment, our library of technical specifications and design details is updated and expanded. As a result, we are able to provide accurate and economical design services to our athletic and recreation clients.



- Bleacher & Grandstand Systems • Press Box & Media Facilities • Sports Lighting • Baseball/Softball Skinned

***Gale provides Bleacher and Grandstand Systems evaluations, planning and design services to dozens of schools and universities. We have completed projects improving ADA accessibility and extending the useful life of existing bleacher systems, indoors and outdoors. Additionally, we have completed projects involving new stadium seating and sophisticated press box facilities.***



**Southbridge  
McMahon Field**



**Mohawk Trail  
Regional H.S.**



**Silver Lake  
Regional H.S.**

**UMass  
New Bleacher  
System**



**Silver Lake Regional H.S.**



***We are confident that our technical standards and proactive focus on client service are a winning combination that assures state-of-the-art design solutions, constructed on time and within budget.***

Gale has completed a wide array of ambitious projects, including regulation synthetic running tracks, tennis courts, stadium bleacher systems, natural and synthetic turf fields, irrigation systems, municipal park and playgrounds, and golf complexes. We invite you to contact us for a complete project listing and to learn more about how Gale Associates, Inc. can assist you with your next project.

***...a proven track record***



***Infields • Hard Court Surface Facilities • Basketball Courts • Tennis Courts • In-line Skating/Hockey Courts •***

***Gale's Hard Court Surface Facilities feature innovative play surfaces and durable, aesthetic finishes. We specify cost-effective, low maintenance hardware and emphasize quality-base course preparation and paving. When tennis, basketball, deck hockey, skateboard or other hard court facilities are required, Gale draws from experienced professionals and devises innovative, cost-effective solutions.***

***Silver Lake Tennis Courts***



***Cameo Park Basketball Court and Deck Hockey***



***Eastern Nazarene College***



***Roberts Field Basketball Courts***



***Weymouth Club Tennis Facilities***





**Gale Associates, Inc.**

163 Libbey Parkway | P.O. Box 890189 | Weymouth, MA 02189-0004

P 781.335.6465

F 781.335.6467

E [info@gainc.com](mailto:info@gainc.com)

[www.galeassociates.com](http://www.galeassociates.com)

**Boston**

800.659.4753

**Bedford, NH**

866.732.4253

**Baltimore**

800.366.1714

**Orlando**

800.326.5693

**San Francisco**

800.704.0325

*E n g i n e e r s   A r c h i t e c t s   P l a n n e r s*